

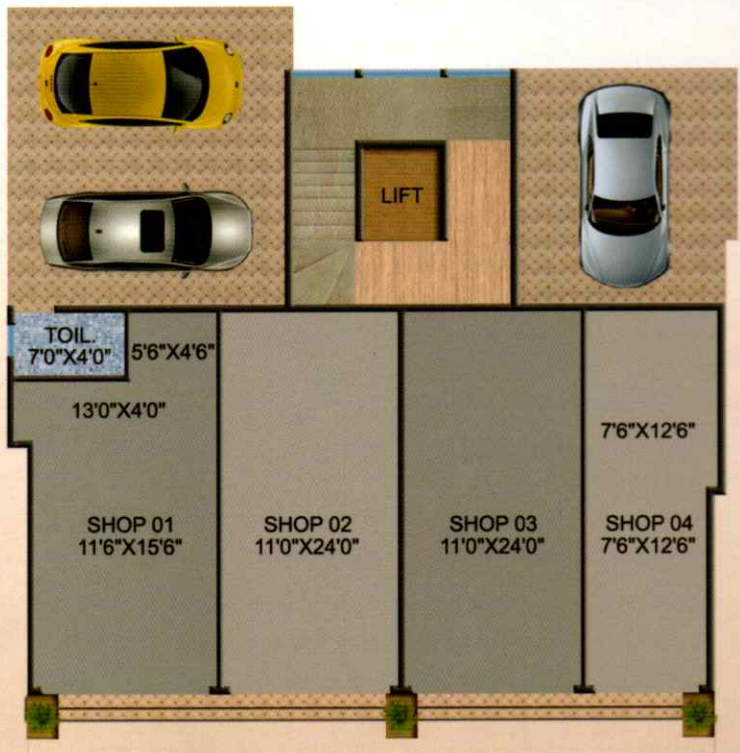


SHREEKRISHNA NIWAS

Tilak nagar, Dombivli(E).

by

M/S Sainath Enterprises

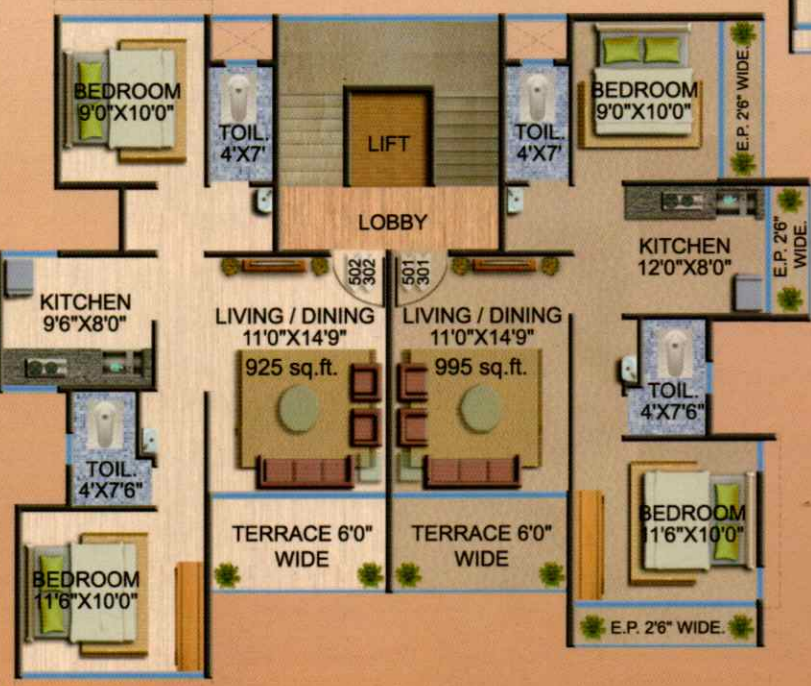


GROUND FLOOR PLAN

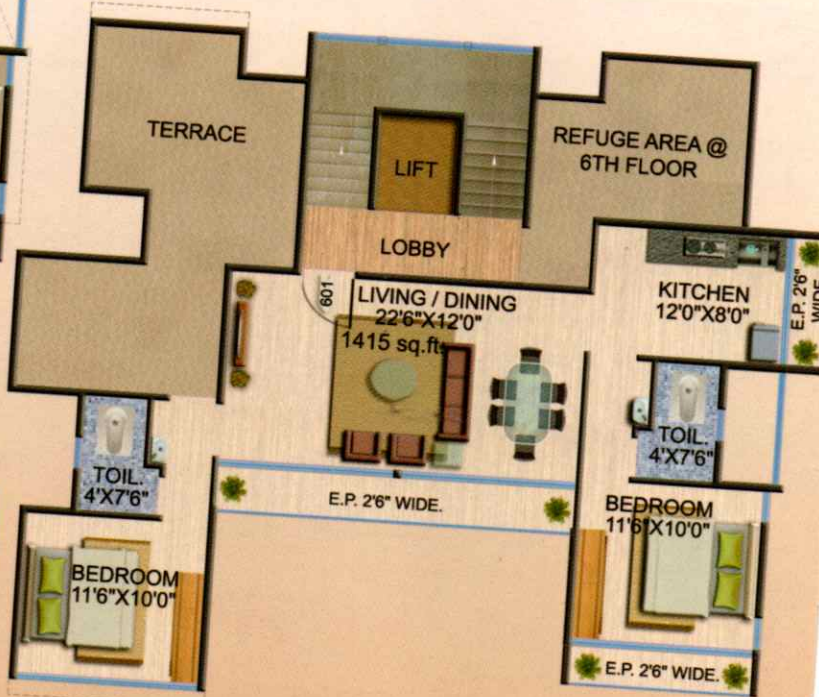
FIRST FLOOR PLAN



3rd & 5th FLOOR PLAN

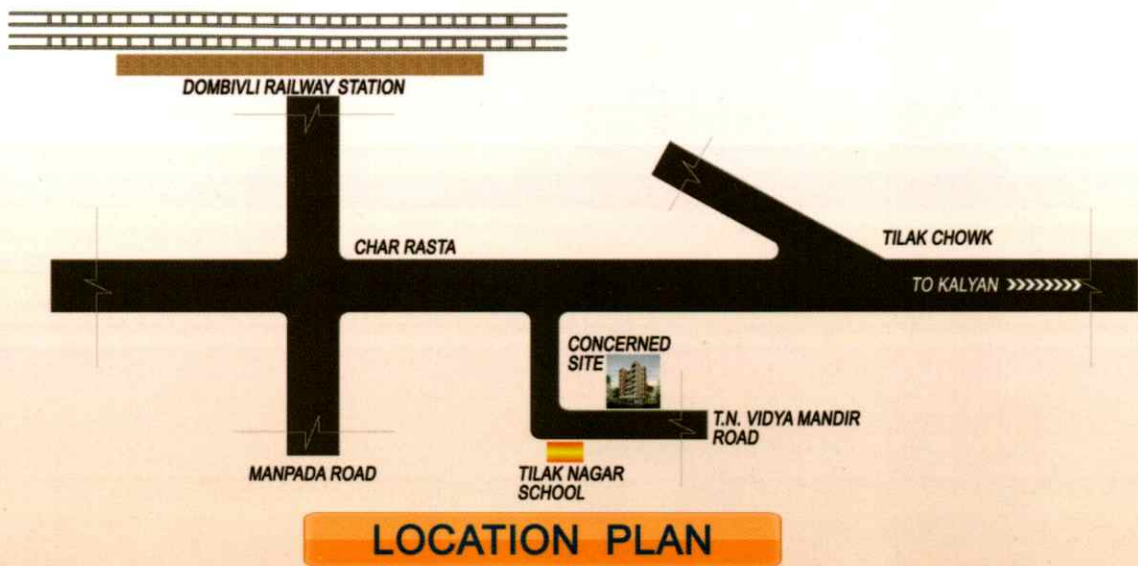


FOURTH FLOOR PLAN



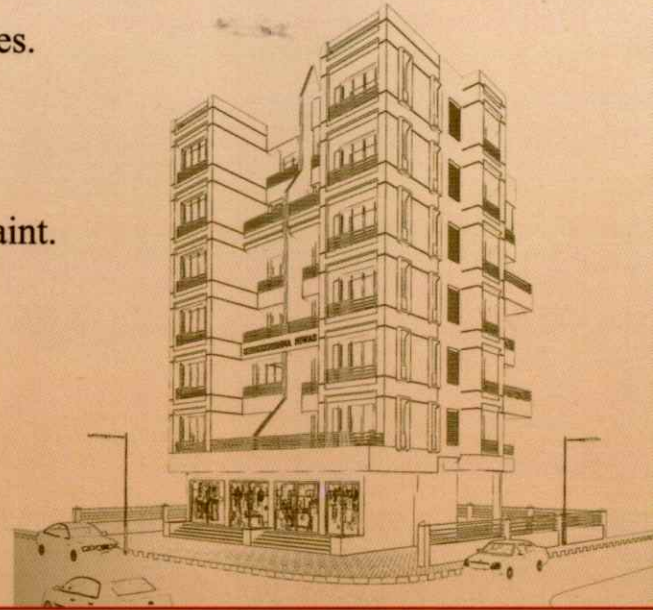
SIXTH FLOOR PLAN





AMENITIES

- ★ R.C.C. Framed Structure as per I.S. code
- ★ Vitrified floor tiles.
- ★ Granite kitchen platform with s.s.sink.
- ★ Aluminium anodised windows.
- ★ Concealed wiring with branded switches, Polycab cables.
- ★ Teakwood main door, block board internal door aluminium anodised toilet doors with bakelite.
- ★ Double coat external plaster, P.O.P. internal finish.
- ★ Water proof external paint, acrylic distemper internal paint.
- ★ M.S. grill for windows.
- ★ Common dish antenna for T.V.
- ★ Generator backup to lift, parking, common area light.
- ★ Intercome security system.
- ★ Solar water heating system.
- ★ Fire fighting system.
- ★ Rainwater harvesting.



-: Site Address :-

Tilak nagar vidya mandir road, Tilak nagar, Dombivli (E.)

-: Developers :-

M/S. Sainath Enterprises.

Shop no:-4, Aditi apts, mithagar rd., Mulund (E.)

Architect

Uday R. Satavalekar,
dombivli (E.)

R.C.C. Consultant

R.C. Tipnis,
Mulund (E.)

Legal Advisor

Samir K. Vaidya,
Mulund (E.)

Notes:- The content of this Brocher are purely conceptual and have no legal binding on us.

Developers reserve the rights to amend the layout plan, number of flats, elevation, colour scheme, specifications and other amenities.